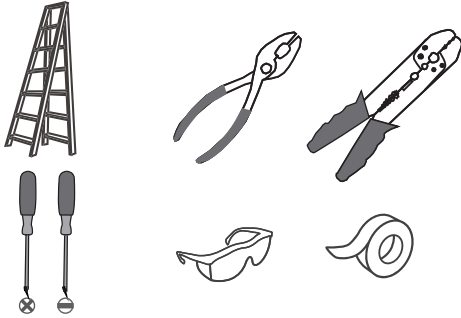


Tools Required



Light Source

12W
LED

Warnings and Cautions

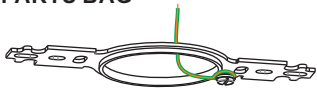
Turn off the electricity at the circuit breaker before installation. Consult a licensed electrician if in doubt about installation.

Package Contents

Preparation: Identify and inspect all parts before beginning the installation.

Missing or damaged parts? Contact your original place of purchase.

PARTS BAG



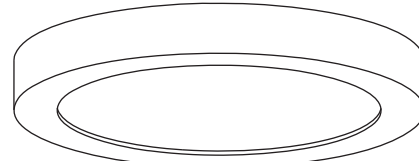
A Mounting Bracket
x 1



B Outlet Box Screw
x 2



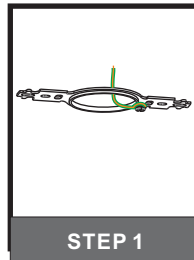
C Wire Connector
x 3



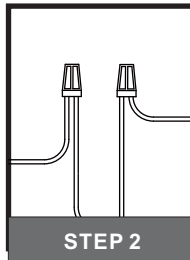
D Fixture Body
x 1

Table of Contents

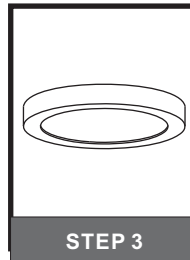
Mounting Bracket



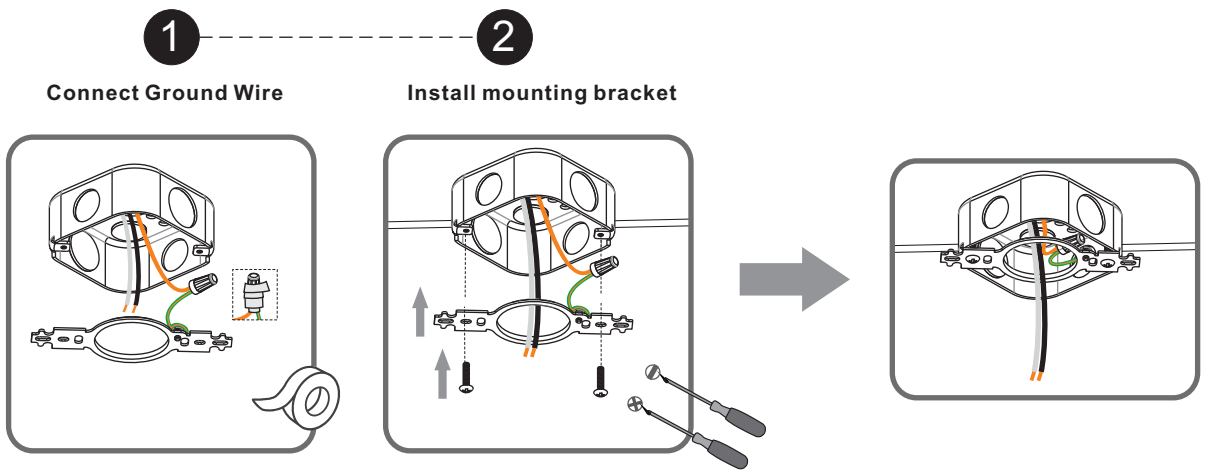
Wiring



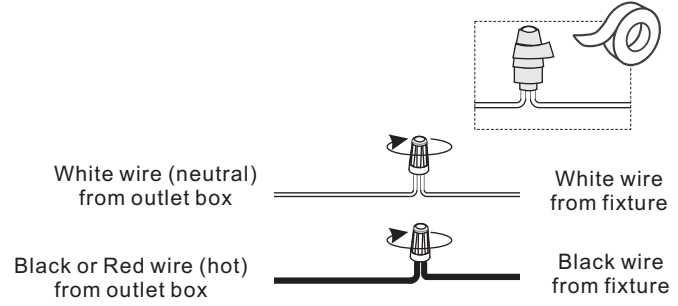
Fixture Body



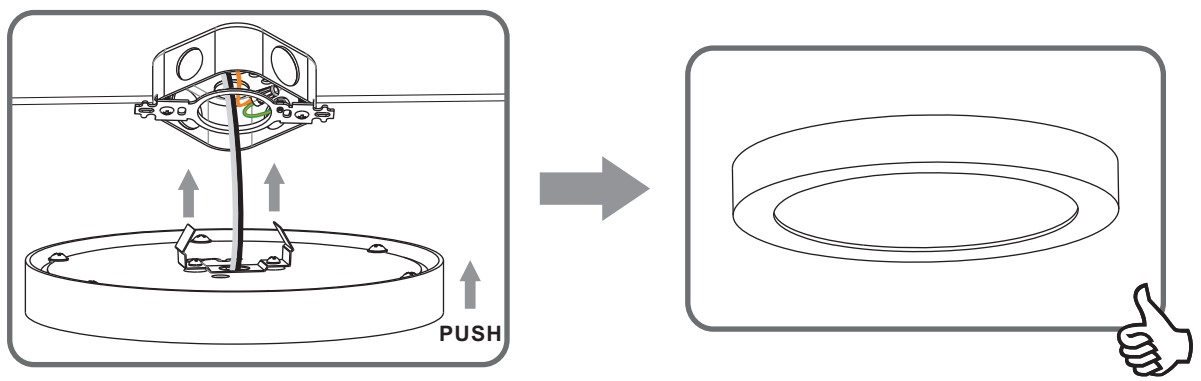
STEP 1



STEP 2



STEP 3



MAINTENANCE - HOW TO REMOVE THE FIXTURE BODY AFTER ASSEMBLY.

