

HINKLEY

3 SPEED FAN & LIGHT WALL CONTROL WITH SMART CONTROL RECEIVER INSTALLATION INSTRUCTIONS

Model: 980017

READ AND SAVE THESE INSTRUCTIONS

GENERAL INFORMATION

This wall control is designed to separately control your ceiling fan speed and light brightness.

- The fan button will control the fan speed. (Hi, Medium, Low)
- The light buttons will control the lights, brightness dimmer and off.
- The red indicator on the transmitter will light when the button is pressed.

NOTE: When installing the remote control, be sure your fan control or pull chain switch are in the "HIGH SPEED" position and the light control or switch is set to "ON".

INSTALLATION AND OPERATING INSTRUCTIONS

NOTE: This wall control unit is equipped with 16 code combinations to prevent possible interference from or to other remote units. The frequency switches on your receiver and transmitter have been preset at the factory. Please recheck to make sure the switches on transmitter and receiver are set to the same position, any combination of settings will operate the fan as long as the transmitter and receiver are set to the same position.

1. SETTING THE CODE

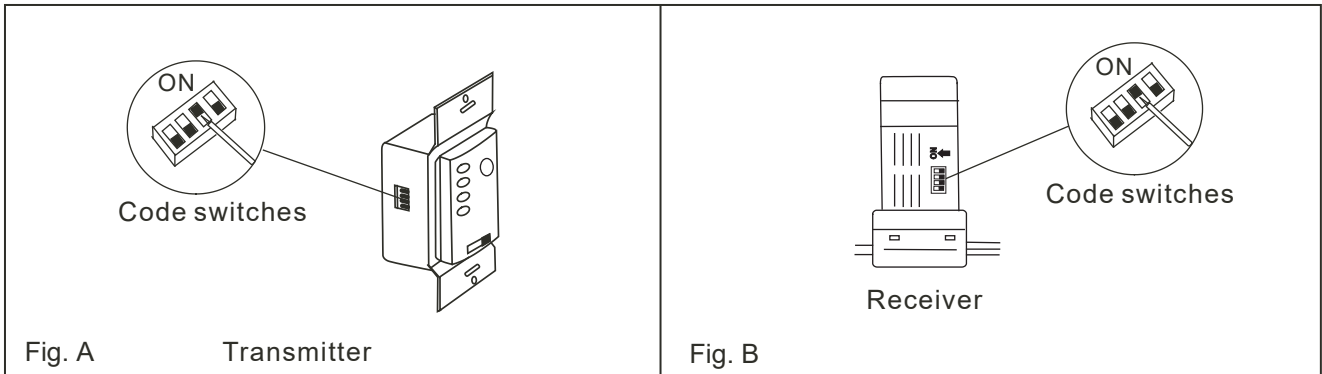
This unit has 16 different code combinations. To set the code, perform these steps:

A. Setting the code on the transmitter:

- Slide the code switches to your choice of up or down position. (Factory setting is all up). Do not use this Position. Use a small screwdriver or a ballpoint pen to slide firmly up or down (Figure A).

B. Setting the code on the receiver:

- Slide the code switches to the same positions as set on your transmitter (Figure B).



2. INSTALLING RECEIVER IN THE CEILING FAN

A. Safety precautions:

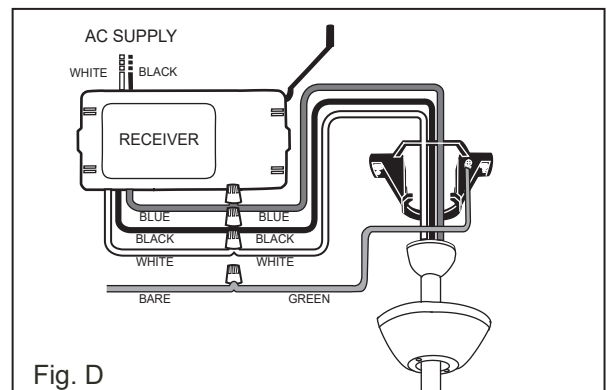
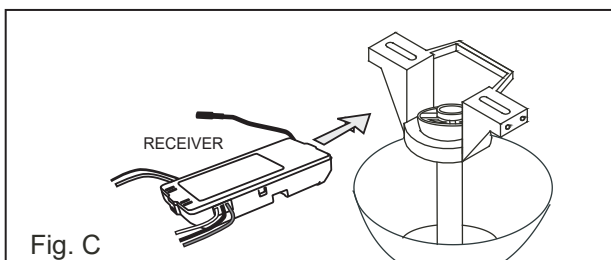
WARNING: HIGH VOLTAGE! Household electrical power can cause serious injury or death. Disconnect the source of electrical power to the ceiling fan by removing the fuse or switching off the circuit breaker.

B. Installing receiver in fan.:

- Remove the ceiling fan canopy from the mounting bracket.
- Disconnect the existing wiring between the ceiling fan and supply at the electrical junction box.
- Lay the black antenna wire on top of the receiver, and put the receiver in the mounting bracket. (Fig. C)
- Make the connections as follows, using the wire nuts supplied: (Fig. D)

CONNECT TO

Green fan wire.....Bare supply wire
Black receiver wire (AC IN L).....Black supply wire
White receiver wire (AC IN N).....White supply wire
White receiver wire (TO MOTOR N).....White fan wire
Black receiver wire (TO MOTOR L).....Black fan wire
Blue receiver wire (FOR LIGHT).....Blue light wire



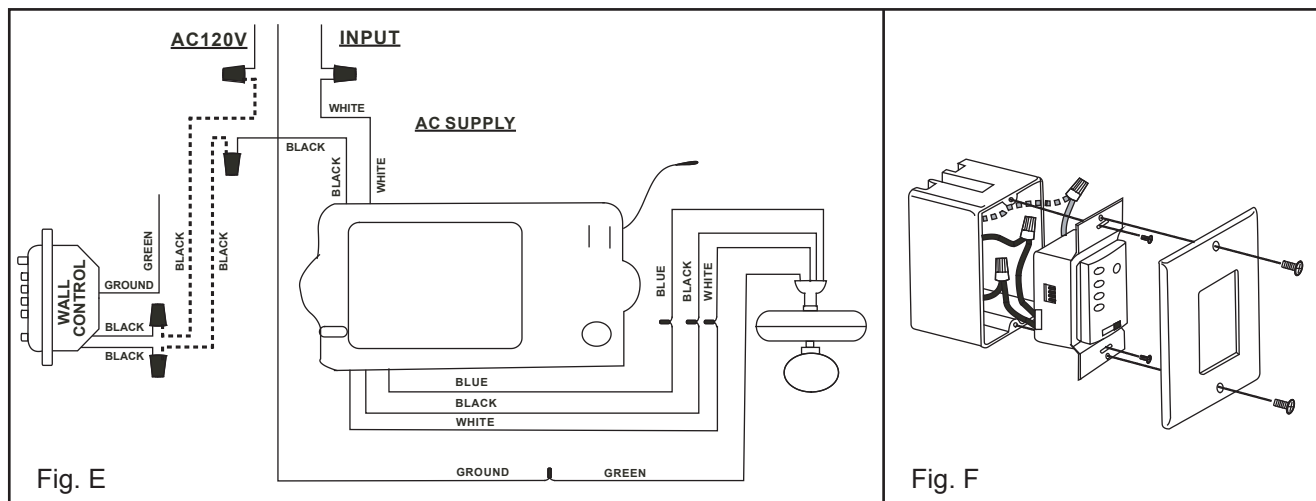
If other fan or supply wires are different color, have this unit installed by a qualified electrician.

- e. Push all connected wires up into junction box.
- f. Reinstall the canopy on the mounting bracket.
- g. Restore the electrical power.

3. INSTALLING THE WALL TRANSMITTER

WARNING! HOOK UP "IN SERIES" ONLY. DO NOT CONNECT NEUTRAL SUPPLY WIRE OF ELECTRIC CIRCUIT TO THE TRANSMITTER WALL SWITCH, DAMAGE TO THE TRANSMITTER WALL SWITCH AND POSSIBLE FIRE COULD OCCUR.

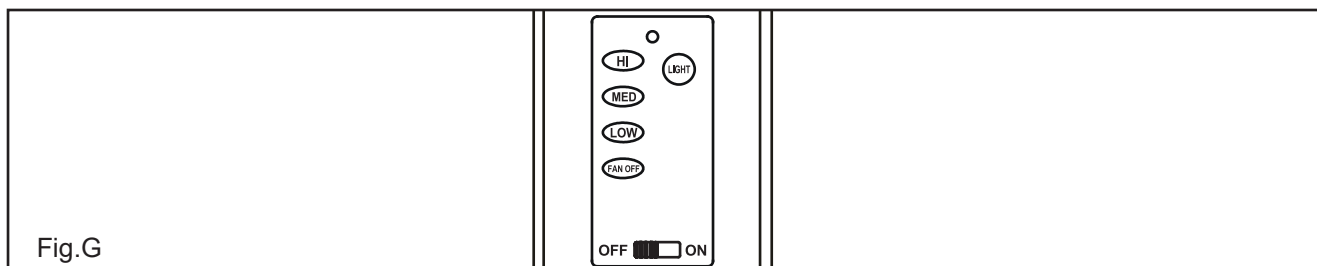
- a. Remove the existing wall plate and switch from the wall outlet box.
- b. Make the electrical connections as shown in Fig.E. If your outlet box has a ground wire (Green or Bare Copper) connect the Transmitter's ground wire directly to one of the screws from the outlet box . Secure all wire connections with the plastic wire nuts provided.
- c. Carefully tuck the wire connections inside the outlet box. Use the screws provided to secure the wall transmitter and wall plate to the outlet box. (Fig. F)



4. OPERATING TRANSMITTER:

- A. Store the transmitter away from excess heat or humidity.
- B. This remote control unit is equipped with 16 code combinations to prevent possible interference from or to other remote units such as garage door openers, car alarm or security system. If you find that your fan and light kit go on and off without using your remote control, simply change the combination code in your transmitter and receiver.
- C. Operation buttons on the panel of the transmitter: (Figure G)
 - HI button - for fan high speed.
 - MED button - for fan medium speed.
 - LOW button - for fan low speed.
 - FAN OFF button - for fan speed off.

The "**LIGHT**" button: This Button will control the light brightness. The light function is controlled by pressing the "**LIGHT**" button. Hold the button down to increase or decrease the light. Tap the button quickly to turn the light off or on. If you press the button in excess of 0.7 seconds it becomes a dimmer. The light varies cyclically in 0.8 seconds. The light key has auto resume, so it will stay at the same brightness as the last time it was turned off.



YOUR REMOTE NOW HAS FULL CONTROL OF THE FAN AND LIGHT.

5. TROUBLESHOOTING GUIDE

- A. **Fails to operate:**
 - a. Power to the receiver?
 - b. Receiver wired correctly?
 - c. Fan manual speed control in highest position?
 - d. Light kit switch turned on?
 - e. Code set at exact same position in both transmitter and receiver?
- B. **Won't operate at distance:**
 - If transmitter operates the fan and the light kit when up close, but not a 30 feet away, try placing the black antenna wire higher; up through the ceiling, outside the junction box.

NOTICE!

Your ceiling fan and light kit assembly must meet the following requirements:

1. Do not use with solid state fans.
2. Electrical rating: 120V / 60 Hz
MAX. motor amps: 1.0 A
MAX. light watts: 250 W
(Incandescent only)

For Warranty Information please visit www.hinkley.com

SMART CEILING FAN WIFI REMOTE CONTROL

INSTALLATION & OPERATING INSTRUCTIONS

SMART PHONE install add device

1. Install with WIFI APP

- A. To enjoy all the potential of your new device, you will need to download the BOND HOME app, available on the Google Play Store and Apple App Store
- B. Use the QR code presented in Figure 1 to download the app, or you can download the app using below link. <http://bondhome.io/app>.



- C. After you download the app, register new account and password.

NOTE: Please keep this account property, you will use this account when you connect with you smart speaker.

- D. After you Log into the main page, you will see the ”+ ”on the right side of top space.

- E. You will see ADD a new device screen, and choose Smart by Bond. Then you could follow the config WiFi process to continue pairing.

- F. After the pairing process is complete you can control. the fan speed, light functions on the app.

2. Process to make the fan discoverable:

- A. Press and hold the "off" button for 5 seconds. The light will turn on and off to indicate discovery mode.

- B. Add a device per the instruction above.

