

NTE-854

Jason Square LED Track Head

Source: 18W to 38W LED
1400lm to 2800lm

Type
Project
Catalog No.
Notes

PRODUCT DESCRIPTION

Small scale, LED Cylinder Track Fixture delivering up to 2800 lumens. Constructed of extruded and machined aluminum, the heat-sink and integrated driver housing provide a sleek and modern look, designed to quietly compliment any space. Dimming is standard and allows smooth illumination down to 10% precision adjustment. 315° aiming horizontal rotation, 90° vertical rotation. Integral on/off switch and track polarity indicator are standard.

FEATURES

- 1400lm, 2200lm or 2800lm LED packages
- 3500K @ 80 CRI
- Available in spot, narrow flood or flood beam spread
- Black or White finish
- Integral dimmable driver
- Die-cast aluminum construction with deep set COB optics
- Lens holder accommodates one accessory
- Clear glass lens included

CONSTRUCTION

Housing: Die-cast aluminum construction dissipates heat for longer life.

Optics: Molded TIR Optic engineered to provide a smooth uniform beam, maximizing output and minimizing glare. Available in spot, medium or flood beam spreads.

Adjustability: 315° horizontal and 90° vertical adjustment

ELECTRICAL

Input Voltage: 120V

Lumens / Wattage: 18 = 1400lm / 18W; 26 = 2200lm / 26W; 33 = 2800lm / 38W

Binning: 2-Step MacAdam (2 SDCM)

Color Temperature: 3500K

CRI: 80

Beam Spread: 24° spot, 40° narrow flood or 60° flood

Dimming: Triac or ELV

[Click Here](#) or check complete dimmer list at www.NoraLighting.com in the "Compatibility" page under "Resources" tab

One / Two Circuit Conversion: Positive contact (opposite neutral and ground contacts) is preset to "down" position at factory, but may be raised to the higher position to install onto the second circuit of Nora Lighting NT-2300 series two-circuit track.

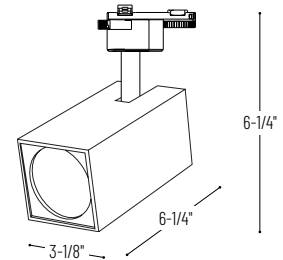
Accessories: Luminaire will accommodate (1) glass or louver and (1) snoot, no accessory holder is required.

LABELS AND LISTINGS

- cULus Listed for dry locations
- [5-Year Limited Warranty](#)



PRODUCT IMAGES AND DIMENSIONS



Jason Square LED Track Head

Series	Lumens / Wattage	Beam Spread	Color Temperature / CRI	Finish
NTE-854	18 = 1400lm / 18W	S = 24° Spot	35 = 3500K / 80 CRI	B = Black
	26 = 2200lm / 26W	M = 40° Narrow Flood	935 = 3500K / 90 CRI (2800lm only)	W = White
	33 = 2800lm / 38W	F = 60° Flood		

Optional Accessories

Description
NTE-855SN = Snoot, Black
NTE-855SNWW = Directional Shield, Black
NTE-855HC = Honeycomb Louver
NTE-855CG = Clear Glass
NTE-855FG = Frosted Glass
NTE-855REFL24 = 24° Spot Optic
NTE-855REFL40 = 40° Narrow Flood Optic
NTE-855REFL60 = 60° Flood Optic

Example: **NTE-85426M35W** = Jason Square LED Track Head, 2200lm / 26W, 40° Narrow Flood, 3500K / 80 CRI, White Finish

NTE-854

Jason Square LED Track Head Accessories

Type _____
Project _____
Catalog No. _____
Notes _____



Honeycomb Louver

NTE-855HC

Adds a honeycomb louver accessory to Jason track head.



Frosted Glass

NTE-855FG

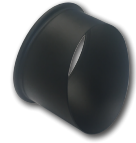
Replaces the clear glass included with Jason track head.



Black Snoot

NTE-855SN

Adds a black snoot which reduces glare and spill light.



Black Directional Shield

NTE-855SNWW

Directional shield provides 45° cutoff.



Field Replaceable Optics

- NTE-855REFL24** 24° Spot
- NTE-855REFL40** 40° Narrow Flood
- NTE-855REFL60** 60° Flood

Luminaire's optics can be changed in the field