

# NOXTW-56 Series

5"/6" Onyx Tunable White Retrofit Reflectors

Source: 15.5W  
1100lm

Type

Project

Catalog No.

Notes

## PRODUCT DESCRIPTION

Onyx 5"/6" Tunable White Retrofit Series include an integral tunable CCT switch. Spun aluminum construction provides clean sharp edges and is suitable for use with most 5" and 6" recessed housings. Deep regressed optics and round aperture deliver even and glare-free illumination.

## FEATURES

- 1100lm / 15.5W LED light engine
- Selectable CCT (2700K, 3000K, 3500K, 4000K or 5000K @ 90+ CRI)
- Integral dimmable driver
- Includes medium base socket adaptor for easy retrofitting in 5" or 6" recessed housings
- 5-year limited warranty
- ENERGY STAR certified
- cULus classified for wet locations

## SPECIFICATION

**Reflector:** One piece, spun aluminum construction dissipates heat and extends life. Unitized Thermal Management, UTM, provides exceptional cool operation.

**Housings:** Compatible with most 5" and 6" IC and non-IC housings by Nora and others.

**Mounting:** Two steel, torsion mounting springs allow for easy and secure mounting in most 5" and 6" housings.

**Retrofit:** Onyx retrofit series includes medium base screw-socket adapter (NRA-211SM) for retrofitting into existing medium base downlight housings. GU24 socket adapter is available for use with GU24 housings, must specify NRA-212SM.

## ELECTRICAL

**Input Voltage:** 120V

**Lumens / Wattage:** 1100lm / 15.5W

**Color Temperature:**

2700K, 3000K, 3500K, 4000K or 5000K (each luminaire includes a CCT switch)

**CRI:** 90+CRI

**Dimming:** Triac or ELV

[Click Here](#) or check complete dimmer list at

www.NoraLighting.com in the "Compatibility" page under "Resources" tab

## COMPATIBLE HOUSINGS

Onyx reflectors are compatible with most 5" & 6" IC and Non-IC housings by Nora and others.

### Fire Box

- 🔥 NFBIC-5INCATA 5" ICAT Fire Box
- 🔥 NFBIC-5LMRATA\* 5" ICAT Dedicated LED Fire Box
- 🔥 NFBIC-6INCATA 6" ICAT Fire Box
- 🔥 NFBIC-6LMRATA\* 6" ICAT Dedicated LED Fire Box

### New Construction

- NHIC-5LMRAT\* 5" ICAT Dedicated LED
- NHIC-5LMRAT/277\*<sup>1</sup> 5" ICAT Dedicated LED, 277V
- NHIC-527LMRAT\* 5" ICAT Shallow Dedicated LED
- NHIC-501QAT 5" ICAT Line Voltage
- NHIC-527QAT 5" ICAT Shallow Line Voltage
- NH-501Q 5" Line Voltage
- NHIC-5G24ATFL 5" ICAT GU24
- NHIC-6LMRAT\* 6" ICAT Dedicated LED
- NHICCP-6LMRAT\* 6" Chicago Plenum Dedicated LED
- NHIC-6LMRAT/277\*<sup>1</sup> 6" ICAT Dedicated LED, 277V
- NHIC-27LMRAT\* 6" ICAT Shallow Dedicated LED
- NHIC-17QAT 6" ICAT Line Voltage
- NHIC-17QNBAT 6" ICAT Line Volt (No Bracket)
- NHIC-27QAT 6" ICAT Shallow Line Voltage
- NH-26Q 6" Line Voltage
- NH-26QNB 6" Line Voltage (No Bracket)
- NHIC-6G24ATFL 6" ICAT GU24

### Remodel

- NHRIC-5LMRAT\* 5" ICAT Dedicated LED
- NHRIC-527LMRAT\* 5" ICAT Shallow Dedicated LED
- NHRIC-504QAT 5" ICAT Line Voltage
- NHRIC-527QAT 5" ICAT Shallow Line Voltage
- NHR-504Q 5" Line Voltage
- NHRIC-5G24ATFL 5" ICAT GU24
- NHRIC-6LMRAT\* 6" ICAT Dedicated LED
- NHRIC-27LMRAT\* 6" ICAT Shallow Dedicated LED
- NHRIC-17QAT 6" ICAT Line Voltage
- NHRIC-17QNBAT 6" ICAT Line Volt (No Bracket)
- NHRIC-27QAT 6" ICAT Shallow Line Voltage
- NHR-26Q 6" Line Voltage
- NHRIC-6G24ATFL 6" ICAT GU24

\* Nora LED Dedicated housings are cULus listed for use only with Nora LED Retrofits.

<sup>1</sup> Housings include a step down transformer

## LABELS AND LISTINGS

- cULus classified for Wet Locations
- ENERGY STAR certified (WW only)
- [5-Year Limited Warranty](#)
- Meets ASTM-E283 Air-Tight requirements
- FCC compliant
- Certified to the high efficacy requirements of California Title 24 JA8-2019



## PRODUCT IMAGES AND DIMENSIONS

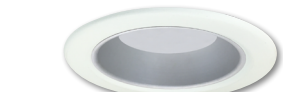
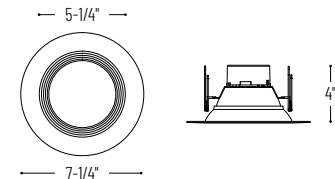


**NOXTW-5631WW**  
White Reflector  
White Flange

**NOXTW-5631BB**  
Black Reflector  
Black Flange



**NOXTW-5632**  
White Baffle / White Flange



**NOXTW-5631WW / NOX-56REFLHZ**  
White Reflector with Haze Reflector Insert



**NOXTW-5631WW / NOX-56BAFB**  
White Reflector with Black Baffle Insert

## 5"/6" Onyx Tunable White Reflectors

Reflector Type	Color Temperature / CRI	Finish
<b>NOXTW-5631</b> = Round Reflector	(blank) = 2700K, 3000K, 3500K, 4000K, 5000K	<b>BB</b> = Black / Black Flange (NOXTW-5631 only)
<b>NOXTW-5632</b> = Round Baffle		<b>WW</b> = White / White Flange

## Optional Accessories

Description
<b>NOX-56REFLB</b> = 5"/6" Black Reflector Insert for NOXTW-5631
<b>NOX-56REFLD</b> = 5"/6" Clear Diffused Reflector Insert for NOXTW-5631
<b>NOX-56REFLHZ</b> = 5"/6" Haze Reflector Insert for NOXTW-5631
<b>NOX-56BAFB</b> = 5"/6" Black Baffle Insert for NOXTW-5631
<b>NOX-56BAFW</b> = 5"/6" White Baffle Insert for NOXTW-5631
<b>NOX-56EYELIDW</b> = 5"/6" Round White Eyelid
<b>NOX-56OR-W</b> = 5"/6" Round White Oversize Ring
<b>NOX-56BLADE</b> = 5"/6" Blade for housings without spring brackets
<b>NRA-211SM</b> = Medium base screw-in socket (included w/ each)
<b>NRA-212SM</b> = Socket adapter for use with GU24 housings

Example: **NOXTW-5631WW** = 5"/6" Onyx Tunable White Round Reflector LED Retrofit, White Reflector / White Flange

## NOXTW-56 Series

5"/6" Onyx Tunable White Retrofit Reflector Accessories

Type

Project

Catalog No.

Notes



Onyx Reflector Insert

**NOX-56REFLB**

Black

**NOX-56REFLD**

Clear Diffused

**NOX-56REFLHZ**

Haze

Round reflector insert is field changeable used to convert the reflector finish for NOXTW-5631.



Onyx Baffle Insert

**NOX-56BAFB**

Black

**NOX-56BAFW**

White

Round baffle insert is field changeable used to convert reflector (NOXTW-5631) to baffle.



Onyx Eyelid

**NOX-56EYELIDW**

White

Round eyelid clips on reflector or baffle to convert into half moon wall wash

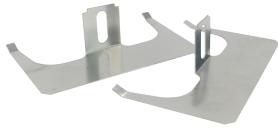


Onyx Oversize Ring

**NOX-56OR-W**

White

Round oversize ring covers large ceiling cut-outs up to 8-1/4"



Onyx Blade Replacement

**NOX-56BLADE**

Pair of Two

Replaces torsion springs with mounting blades for recessed housings without spring brackets.



Medium Base Screw-In Socket

**NRA-21ISM**

Medium base screw-in socket adapter for retrofitting into existing medium base housings. One is included with each luminaire.



Socket Adapter for GU24 Housings

**NRA-212SM**

GU24 socket adapter for retrofitting into existing GU24 housings.

# PHOTOMETRICS

## 5"/6" Onyx Tunable White Retrofit Reflectors

Type

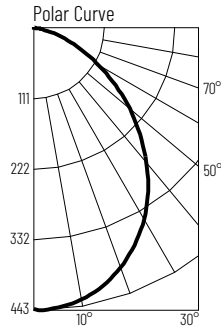
Project

Catalog No.

Notes

### Test Information

Test Number: NTR1173  
 Part Number: NOXTW-5631WW  
 Beam Spread: 93° Wide Flood  
 Lumens: 947lm  
 Wattage: 15.65W  
 Efficacy: 60lpw  
 CCT / CRI: 2700K / 90 CRI  
 Spacing Criteria (0°-180): 1.18  
 Spacing Criteria (90°-270): 1.18



### Illuminance at a Distance

Distance from Luminaire	FC at Nadir	Beam Diameter
4'	27.7fc	8'-5"
6'	12.3fc	12'-6"
8'	6.9fc	16'-8"
10'	4.4fc	20'-11"
12'	3.1fc	25'-1"

### Zonal Lumen Summary

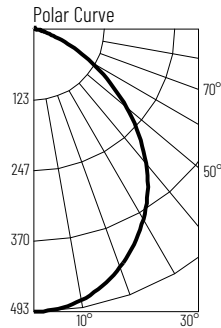
Zone	Lumens	% Luminaire
0-30	159	16.8
0-40	525	55.4
0-60	835	88.2
0-90	938	99.1
90-180	8	0.9
0-180	947	100

### Candela Table

Vertical Angles	Candela
0	443
5	440
15	417
25	372
35	311
45	232

### Test Information

Test Number: NTR1174  
 Part Number: NOXTW-5631WW  
 Beam Spread: 93° Wide Flood  
 Lumens: 1057lm  
 Wattage: 15.45W  
 Efficacy: 68lpw  
 CCT / CRI: 3000K / 90 CRI  
 Spacing Criteria (0°-180): 1.18  
 Spacing Criteria (90°-270): 1.18



### Illuminance at a Distance

Distance from Luminaire	FC at Nadir	Beam Diameter
4'	30.8fc	8'-5"
6'	13.7fc	12'-7"
8'	7.7fc	16'-10"
10'	4.9fc	21'
12'	3.4fc	25'-4"

### Zonal Lumen Summary

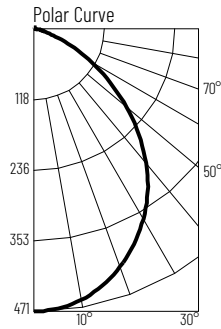
Zone	Lumens	% Luminaire
0-30	368	34.8
0-40	585	55.4
0-60	933	88.2
0-90	1049	99.2
90-180	9	0.8
0-180	1057	100

### Candela Table

Vertical Angles	Candela
0	493
5	490
15	464
25	415
35	348
45	261

### Test Information

Test Number: NTR1175  
 Part Number: NOXTW-5631WW  
 Beam Spread: 98° Wide Flood  
 Lumens: 1087lm  
 Wattage: 15.43W  
 Efficacy: 70lpw  
 CCT / CRI: 3500K / 90 CRI  
 Spacing Criteria (0°-180): 1.2  
 Spacing Criteria (90°-270): 1.2



### Illuminance at a Distance

Distance from Luminaire	FC at Nadir	Beam Diameter
4'	29.5fc	9'-2"
6'	13.1fc	13'-10"
8'	7.4fc	18'-5"
10'	4.7fc	23'
12'	3.3fc	27'-7"

### Zonal Lumen Summary

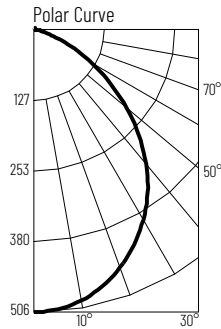
Zone	Lumens	% Luminaire
0-30	357	32.8
0-40	573	52.8
0-60	943	86.8
0-90	1078	99.2
90-180	9	0.8
0-180	1087	100

### Candela Table

Vertical Angles	Candela
0	471
5	468
15	447
25	405
35	348
45	271

### Test Information

Test Number: NTR1176  
 Part Number: NOXTW-5631WW  
 Beam Spread: 95° Wide Flood  
 Lumens: 1134lm  
 Wattage: 15.36W  
 Efficacy: 74lpw  
 CCT / CRI: 4000K / 90 CRI  
 Spacing Criteria (0°-180): 1.18  
 Spacing Criteria (90°-270): 1.14



### Illuminance at a Distance

Distance from Luminaire	FC at Nadir	Beam Diameter
4'	31.6fc	8'-10"
6'	14.1fc	13'-2"
8'	7.9fc	17'-7"
10'	5.1fc	21'-11"
12'	3.5fc	26'-4"

### Zonal Lumen Summary

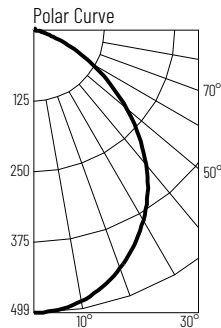
Zone	Lumens	% Luminaire
0-30	379	33.4
0-40	606	53.4
0-60	982	86.6
0-90	1121	98.9
90-180	13	1.1
0-180	1134	100

### Candela Table

Vertical Angles	Candela
0	506
5	503
15	475
25	424
35	357
45	272

### Test Information

Test Number: NTR1177  
 Part Number: NOXTW-5631WW  
 Beam Spread: 95° Wide Flood  
 Lumens: 1118lm  
 Wattage: 15.36W  
 Efficacy: 73lpw  
 CCT / CRI: 5000K / 90 CRI  
 Spacing Criteria (0°-180): 1.18  
 Spacing Criteria (90°-270): 1.14



### Illuminance at a Distance

Distance from Luminaire	FC at Nadir	Beam Diameter
4'	31.2fc	8'-10"
6'	13.9fc	13'-2"
8'	7.8fc	17'-7"
10'	5fc	21'-11"
12'	3.5fc	26'-4"

### Zonal Lumen Summary

Zone	Lumens	% Luminaire
0-30	374	33.4
0-40	597	53.4
0-60	969	86.6
0-90	1106	98.9
90-180	12	1.1
0-180	1118	100

### Candela Table

Vertical Angles	Candela
0	499
5	496
15	469
25	418
35	352
45	268