

NM4-R470

4" M4 Round LED Recessed Elbow

Source: 12W LED
950lm

PRODUCT DESCRIPTION

4" M4 Round LED Elbow downlight features an adjustable head that extends 75° and rotates 300° for precise aiming. Quality and convenience with easy installation for insulated or non-insulated applications. Luminaires can be configured into square trim with accessory.

FEATURES

- No housing required - IC Air-Tight rated
- Field changeable optics included
- Easy installation for remodel or new construction applications
- Square trim available for an alternative appearance
- Quick disconnect allows for extended lengths
- 2700K or 3000K @ 90+ CRI
- Triac or ELV dimming
- 5-year limited warranty
- ENERGY STAR certified
- cETLus Listed for Damp Locations

SPECIFICATION

Construction: Die-cast aluminum trims available in matte black or matte powder white finish. Rotates 300° horizontally and extends up to 75°. Optional field changeable square trim is available.

Optics: Each downlight includes field changeable optics (24° spot and 40° narrow flood - preinstalled).

Air Flow Restriction: Luminaire has factory installed gasket to restrict airflow from room into ceiling plenum to <2CFM (cubic feet per minute) in accordance with ASTM-283 Air-Tight requirements.

Clearance: IC rated luminaires are rated for direct contact with insulation (not spray foam insulation), no minimum clearance is required.

Junction Box: Prewired junction box includes quick connect to LED fixtures for ease of installation. Junction box includes four 1/2" trade size knockouts and snap on cover with 7" quick connect wire. Luminaire includes 6" quick connect wire.

Mounting: No housing is required, two tensions steel spring clips secure luminaire to ceiling. Accommodates ceiling thickness up to 3/4". New construction frame-in available, see mounting accessories.

ELECTRICAL

Input Voltage: 120V
Lumens / Wattage: 950lm / 12W
Color Temperature: 2700K or 3000K
Color Rendering Index: 90+ CRI
Beam Spread: 24° Spot and 40° Narrow Flood (included)
Operating Temp.: 0°C to 25°C ambient temperature
Lifetime: 50,000 hours @ L70
Dimming: Dimmable down to 10% with Triac or ELV
[Click Here](#) or check complete dimmer list at www.NoraLighting.com in the "Compatibility" page under "Resources" tab

OPTIONAL TRIM ACCESSORIES

NM4-SET: Square Trim for NM4-R470, Black or White

OPTIONAL MOUNTING ACCESSORIES

NF-R246: Universal New Construction Frame-In
NM2-EW-4: 4' Quick Connect Linkable Extension Cable
NM2-EW-10: 10' Quick Connect Linkable Extension Cable

LABELS AND LISTINGS

- cETLus Listed for Damp Locations
- ENERGY STAR certified
- [5-Year Limited Warranty](#)
- FCC compliant
- Certified to the high efficacy requirements of California Title 24 JA8-2019



Type

Project

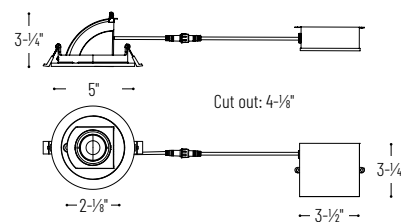
Catalog No.

Notes

Performance Data		
Part Number	Lumens	CCT
NM4-R47027BB	887lm	2700K
NM4-R47027MPW	942lm	2700K
NM4-R47030BB	932lm	3000K
NM4-R47030MPW	970lm	3000K

Delivered lumens will vary depending on optic

PRODUCT IMAGES AND DIMENSIONS



NM4-SET
Square Trim

4" M4 Round LED Recessed Elbow

Trim Type	Color Temperature / CRI	Finish
NM4-R470 = 4" Round Elbow	27 = 2700K / 90 CRI 30 = 3000K / 90 CRI	BB = Matte Black MPW = Matte Powder White

NM4-R470 Trim Accessories

Accessory Type	Finish
NM4-SET = Square Trim for NM4-R470	B = Matte Black MPW = Matte Powder White

Optional Mounting Accessories

Accessory Type
NF-R246 = Universal New Construction Frame-In
NM2-EW-4 = 4' Quick Connect Extension Cable
NM2-EW-10 = 10' Quick Connect Extension Cable

Example: **NM4-R47030MPW** = 4" M4 Round LED Recessed Elbow, 950lm / 12W, 3000K / 90 CRI, Matte Powder White

NM4-R470

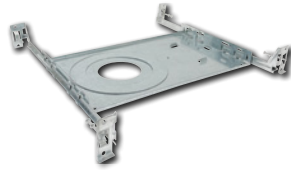
4" M4 Round LED Recessed Elbow Accessories

Type	_____
Project	_____
Catalog No.	_____
Notes	_____



Square Trim for NM4-R470

NM4-SETB Matte Black
NM4-SETPW Matte Powder White
Converts the round trim included with NM4-R470 elbow into a square trim



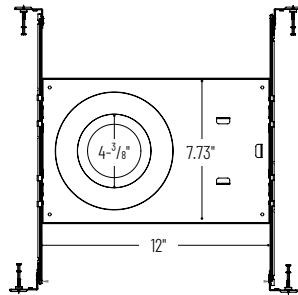
Universal New Construction Frame-In

NF-R246
For new construction pre-wiring and easier layout planning.



Quick Connect Extension Linkable Cables

NM2-EW-4 4' Cable
NM2-EW-10 10' Cable
Use to extend the length between luminaire and driver enclosure. Can be connected together to create custom lengths. Maximum length between luminaire and driver is 40'.



PHOTOMETRICS

NM4-R470

4" M4 Round LED Recessed Elbow

Type

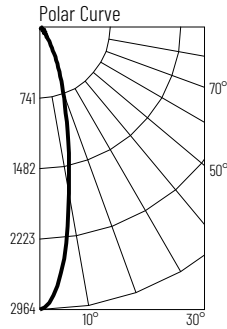
Project

Catalog No.

Notes

Test Information

Test Number: NTR1871R1
 Part Number: NM4-R47027MPW
 Beam Spread: 24° Spot
 Lumens: 935lm
 Wattage: 11.74W
 Efficacy: 80lpw
 CCT / CRI: 2700K / 90 CRI
 Spacing Criteria (0°-180°): 0.42
 Spacing Criteria (90°-270°): 0.42



Illuminance at a Distance

Distance from Luminaire	FC at Nadir	Beam Diameter
4'	185fc	1'-8"
6'	82.2fc	2'-7"
8'	46.2fc	3'-6"
10'	29.6fc	4'-4"
12'	20.5fc	5'-2"

Zonal Lumen Summary

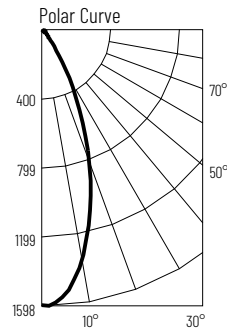
Zone	Lumens	% Luminaire
0-30	721	77
0-40	807	86.2
0-60	899	96.1
0-90	935	100
90-180	0	0
0-180	935	100

Candela Table

Vertical Angles	Candela
0	2958
5	2607
15	1124
25	398
35	128
45	67

Test Information

Test Number: NTR1872R1
 Part Number: NM4-R47027MPW
 Beam Spread: 40° Narrow Flood
 Lumens: 942lm
 Wattage: 11.74W
 Efficacy: 80lpw
 CCT / CRI: 2700K / 90 CRI
 Spacing Criteria (0°-180°): 0.66
 Spacing Criteria (90°-270°): 0.66



Illuminance at a Distance

Distance from Luminaire	FC at Nadir	Beam Diameter
4'	99.7fc	3'
6'	44.3fc	4'-5"
8'	24.9fc	5'-11"
10'	15.9fc	7'-5"
12'	11.1fc	8'-11"

Zonal Lumen Summary

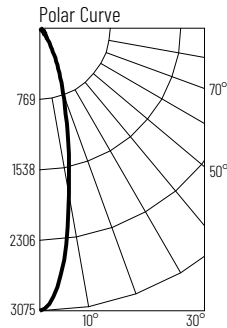
Zone	Lumens	% Luminaire
0-30	697	74
0-40	819	86.9
0-60	912	96.7
0-90	942	100
90-180	0	0
0-180	942	100

Candela Table

Vertical Angles	Candela
0	1595
5	1516
15	1076
25	568
35	200
45	66

Test Information

Test Number: NTR1875R1
 Part Number: NM4-R47030MPW
 Beam Spread: 24° Spot
 Lumens: 958lm
 Wattage: 11.51W
 Efficacy: 83lpw
 CCT / CRI: 3000K / 90 CRI
 Spacing Criteria (0°-180°): 0.42
 Spacing Criteria (90°-270°): 0.42



Illuminance at a Distance

Distance from Luminaire	FC at Nadir	Beam Diameter
4'	192fc	1'-8"
6'	85.3fc	2'-7"
8'	48fc	3'-5"
10'	30.7fc	4'-4"
12'	21.3fc	5'-2"

Zonal Lumen Summary

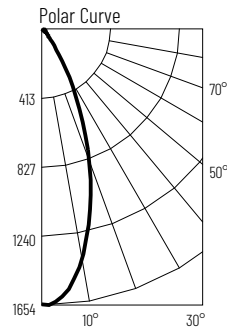
Zone	Lumens	% Luminaire
0-30	733	76.6
0-40	823	85.9
0-60	920	96.1
0-90	958	100
90-180	0	0
0-180	958	100

Candela Table

Vertical Angles	Candela
0	3072
5	2688
15	1183
25	449
35	149
45	73

Test Information

Test Number: NTR1876R1
 Part Number: NM4-R47030MPW
 Beam Spread: 40° Narrow Flood
 Lumens: 970lm
 Wattage: 11.56W
 Efficacy: 84lpw
 CCT / CRI: 3000K / 90 CRI
 Spacing Criteria (0°-180°): 0.66
 Spacing Criteria (90°-270°): 0.66



Illuminance at a Distance

Distance from Luminaire	FC at Nadir	Beam Diameter
4'	103fc	2'-11"
6'	45.9fc	4'-5"
8'	25.8fc	5'-11"
10'	16.5fc	7'-4"
12'	11.5fc	8'-10"

Zonal Lumen Summary

Zone	Lumens	% Luminaire
0-30	716	73.8
0-40	841	86.7
0-60	939	96.8
0-90	970	100
90-180	0	0
0-180	970	100

Candela Table

Vertical Angles	Candela
0	1651
5	1594
15	1120
25	559
35	176
45	56

Finish Multiplier

Finish: Black (x0.95), Matte Powder White (x1.0)