

NHIOICD-28 / NHIOICDCP-28

2" Iolite IC Air-Tight New Construction Housing

Source: 14W LED

800lm or 1000lm

Type

Project

Catalog No.

Notes

PRODUCT DESCRIPTION

New construction housing for use in insulated ceilings can be in direct contact with insulation**. Air-tight construction provides energy savings by reducing the flow of air through the ceiling. Patented design allows for easy, tool-less removal of the driver.

FEATURES

- IC rated for direct contact with insulation**
- Quick connect provided for electrical connection to the LED reflector
- ASTM E283 for Air-Tight
- Patented driver assembly

SPECIFICATION

Housing: 0.040" Aluminum shallow housing with patented driver assembly, allows for driver to slide out without tools. Housing can be installed in 1/2" ceiling thickness, an extension collar is available for ceiling thickness up to 2", must specify NIO-2EXTC2.

Air Flow Restriction: Meets requirements of Air-Tight (AT) <2CFM (cubic feet per minute) in accordance with ASTM-283 Air-Tight requirements.

Clearance:** "IC" Insulated ceiling housings are direct contact rated. Not to be used in direct contact with spray foam insulation.

Bar Hangers: Two 13-3/4" to 24-1/2" adjustable bar hangers with captive nails are included on housing. Bar hangers are parallel to junction box, but can be repositioned 90° perpendicular to junction box if desired. "L"-shaped bar hanger foot to align to bottom of construction joist. A T-bar notch allows for easy installation in a suspended ceiling.

Junction Box: Pre-wired 25 cubic inch 0.064" thick galvanized steel, with seven 1/2" knockouts, four Romex® pryouts, and snap on covers. All leads are #18AWG wire, the ground wire is connected to the bottom, and quick connectors are supplied on all leads. Through branch circuit wiring, (4-in, 4-out). Access above ceiling required.

ELECTRICAL

Voltage: 120V or 120/277V (must specify)

Power Factor: >0.90

Operatin Temp.: 104°F (40°C) max. ambient temperature

Wattage: 14W

Dimming: Triac, ELV, 0-10V or EcoSystem (must specify)

[Click Here](#) or check complete dimmer list at

www.NoraLighting.com in the "Compatibility" page under "Resources" tab

COMPATIBLE REFLECTORS

CATALOG NO.	DESCRIPTION
NI0B-2RC	2" Round Cone Regress
NI0B-2SC	2" Square Cone Regress
NI0B-2RG	2" Round Adj. Surface Gimbal
NI0B-2SG	2" Square Adj. Surface Gimbal
NI0B-2RND	2" Round Deep Reflector
NI0B-2SND	2" Square Deep Reflector
NI0B-2RPHA	2" Round Adjustable Pinhole
NI0B-2RPH	2" Round Pinhole
NI0B-2SND	2" Square Reflector / Square Aperture
NI0B-2RSL	2" Round Adj. Slot Aperture
NI0B-2RNB	2" Round Bullnose
NI0B-2SNB	2" Square Bullnose
NI0-2RTLA	2" Round Trimless Adj. Reflector
NI0-2RTLND	2" Round Trimless Reflector

Emergency: Housing can be specified with connections for emergency battery installation. Requires top access. Must specify battery with remote test switch separately, NEPK-07LEDUNV.

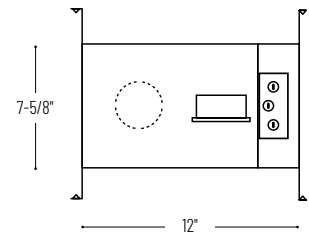
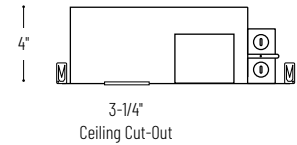
Note: Emergency is not compatible with NHIOICDCP-28

LABELS AND LISTINGS

- cULus Listed for Damp Location (Wet Location when used with compatible reflector)
- [5-Year Limited Warranty](#)
- RoHS Compliant
- Patent #D824567S
- Meets or exceeds ASTM-283 Air-Tight requirements



PRODUCT IMAGES AND DIMENSIONS



2" Iolite IC Air-Tight New Construction Housing - Compatible with NI0B-2 & NI0-2 reflectors

Housing Type	Driver / Dimming	Optional Emergency
NHIOICD-28 = IC Air-Tight	LE3 = 120V input; Triac / ELV dimming	/PEM = Remote Emergency for LE3
	LE4 = 120-277V input; Triac / ELV / 0-10V dimming	/6WPEM = Remote Emergency for LE4
	LUPEQ = 120/277V input; Lutron Hi-lume Premier 0.1% EcoSystem with Soft-On, Fade-to-Black	
	LUPEQ1 = 120/277V input; Lutron Hi-lume 1% EcoSystem with Soft-On, Fade-to-Black	
NHIOICDCP-28 = Chicago Plenum	LE3 = 120V input; Triac / ELV dimming	
	LE4 = 120-277V input; Triac / ELV / 0-10V dimming	
	LUPEQ = 120/277V input; Lutron Hi-lume Premier 0.1% EcoSystem with Soft-On, Fade-to-Black	
	LUPEQ1 = 120/277V input; Lutron Hi-lume 1% EcoSystem with Soft-On, Fade-to-Black	

Optional Accessories

Description
NEPK-07LEDUNV = Remote Emergency Battery w/Test Switch
NIO-2EXTC2 = Ceiling Extension Collar up to 2"

Example: NHIOICD-28LE3 = 2" Iolite IC Air-Tight New Construction Housing, 120V input; Triac / ELV dimming