

Installation Instructions

NRMC2 Series Marquise II Retrofit

IMPORTANT: READ PRIOR TO ATTEMPTING INSTALLATION

INSTALLATION SHOULD BE CARRIED OUT BY YOUR LOCAL ELECTRICIAN.

ALWAYS TURN OFF MAIN POWER BEFORE INSTALLATION

WARNING: Fire/Electrical Hazard

This equipment is intended to be installed only by qualified personnel. The installation must be made in accordance with the current edition to the National Electric Code and all applicable state and local building codes. The final installation must be approved by the appropriate qualified electrical/building inspector(s). Improper installation may result in a fire or electrical hazard. Be sure the electrical power to the circuit has been disconnected before installing this electrical system.

AVERTISSEMENT : Fire / Risque électrique

Cet équipement est destiné à être installé uniquement par du personnel qualifié. L'installation doit être faite en conformité avec l'édition actuelle du Code national de l'électricité et toutes étatiques et locales codes du bâtiment applicables. L'installation finale doit être approuvée par l'inspecteur en électricité / bâtiment qualifié approprié (s). Une mauvaise installation peut entraîner un incendie ou un risque électrique. Soyez sûr de la puissance électrique vers le circuit a été coupée avant l'installation de ce système électrique.

INSTALLATION INSTRUCTIONS

"WARNING - Risk of fire or electric shock. LED Retrofit Kit installation requires knowledge of luminaire electrical systems. If not qualified, do not attempt installation. Contact a qualified electrician."

"WARNING - Risk of fire or electric shock. Install this kit only in luminaires that have the construction features and dimensions shown in the photographs and/or drawings and where the input rating of the retrofit kit does not exceed the input rating of the luminaire."

"Do not make or alter any open holes in an enclosure of wiring or electrical components during kit installation."

"WARNING - To prevent wiring damage or abrasion, do not expose wiring to edges of sheet metal or other sharp objects."

THIS RETROFIT KIT IS ACCEPTED AS A COMPONENT OF A LUMINAIRE WHERE THE SUITABILITY OF THE COMBINATION SHALL BE DETERMINED BY AUTHORITIES HAVING JURISDICTION.

A. PACKAGING CONTENTS

Fig. 1 Marquise II Trim

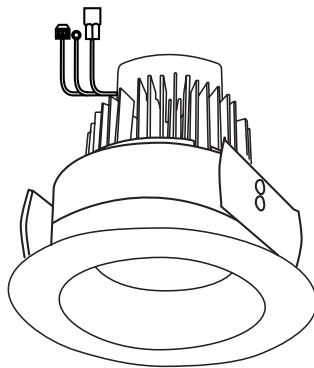


Fig. 2 Retrofit Kit

- a. Medium-base socket adapter
- b. Male Ideal® Connector
- c. LED Lamp Replacement Marking Sticker



LED Lamp Replacement Marking:

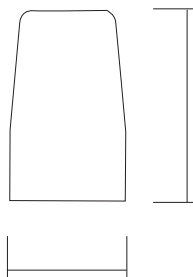
"This luminaire has been modified to operate LED lamps. Do not attempt to install or operate incandescent lamps in this luminaire"

Lamp type/ model
Nora lighting
Ordering information

B. HOUSING DIMENSIONS

	4"	5"	6"
Min. Height	5-1/2"	5-1/2"	5-1/2"
Width	4-1/8"	5-3/8"	6-1/8"

Fig. 3



Safety tests was conducted in minimum housing dimension specified above (Fig. 3). Luminaire malfunction and overheating may occur if installed into a smaller housing.

C. ELECTRICAL RATINGS

Refer to correlation label of luminaire and/or specification sheet in Nora's website. www.noralighting.com

FOR LED/DEDICATED HOUSINGS:

1. Connect orange female to male connector and ground wire of the fixture to housing (Fig.4). Connector is not intended to support weight of the fixture. Please support fixture at all times.
2. Squeeze in mounting blade on both side and carefully push fixture into the housing (Fig.5)
3. Aim fixture straight down r angle towards a focal point.

"Do not make or alter any open holes in an enclosure of wiring or electrical components during kit installation."

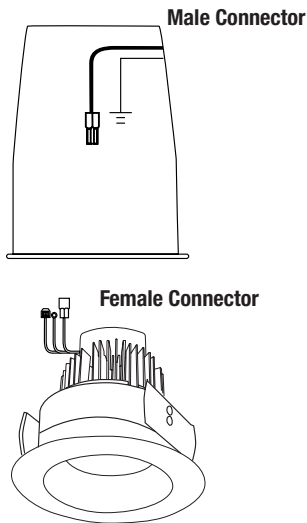


FIGURE 4

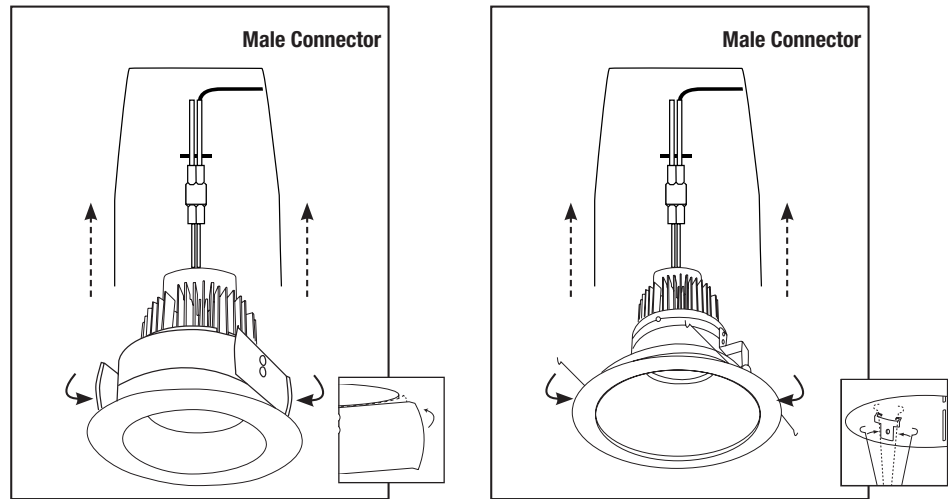


FIGURE 5

Medium Based Housing:

1. Place provided LED Lamp Replacement Marking Sticker inside the housing where visible to installer.
2. Remove medium-base mounting bracket only if necessary to provide room for fixture to be installed fully and properly into the housing. (fig. 7)
3. Use provided Medium-base socket adapter and attach each end to housing and fixture. (fig.8)
4. Aim fixture straight down r angle towards a focal point.

Only those open holes indicated in the photographs and/or drawings may be made or altered as a result of kit installation. Do not leave any other open holes in an enclosure of wiring or electrical components.

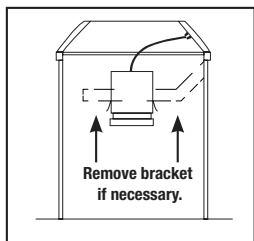


FIGURE 7

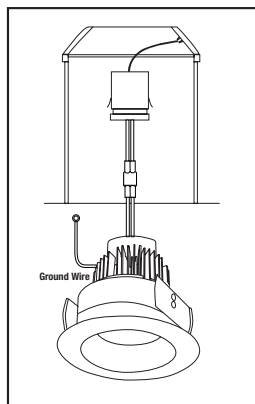
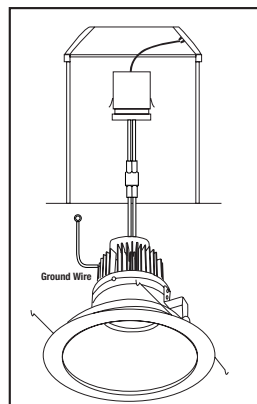


FIGURE 8



Converting Medium Based Housing to Dedicated:

1. Place provided LED Lamp Replacement Marking Sticker inside the housing where visible to installer.
2. Cut Medium-base socket adapter (Figure A)
3. Replace with provided male orange connector (Figure B)
4. Connect ground & fixture to housing (Figure C)
5. Squeeze in mounting blade on both side and carefully push fixture into the housing (Fig.5)
6. Aim fixture straight down r angle towards a focal point.

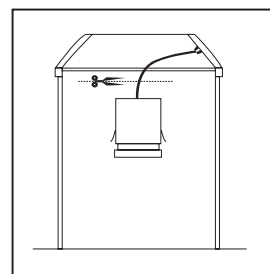


FIGURE A

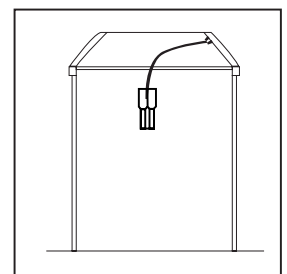


FIGURE B

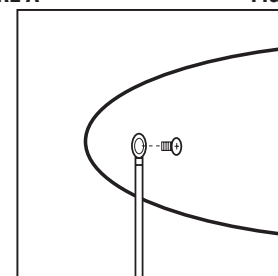


FIGURE C