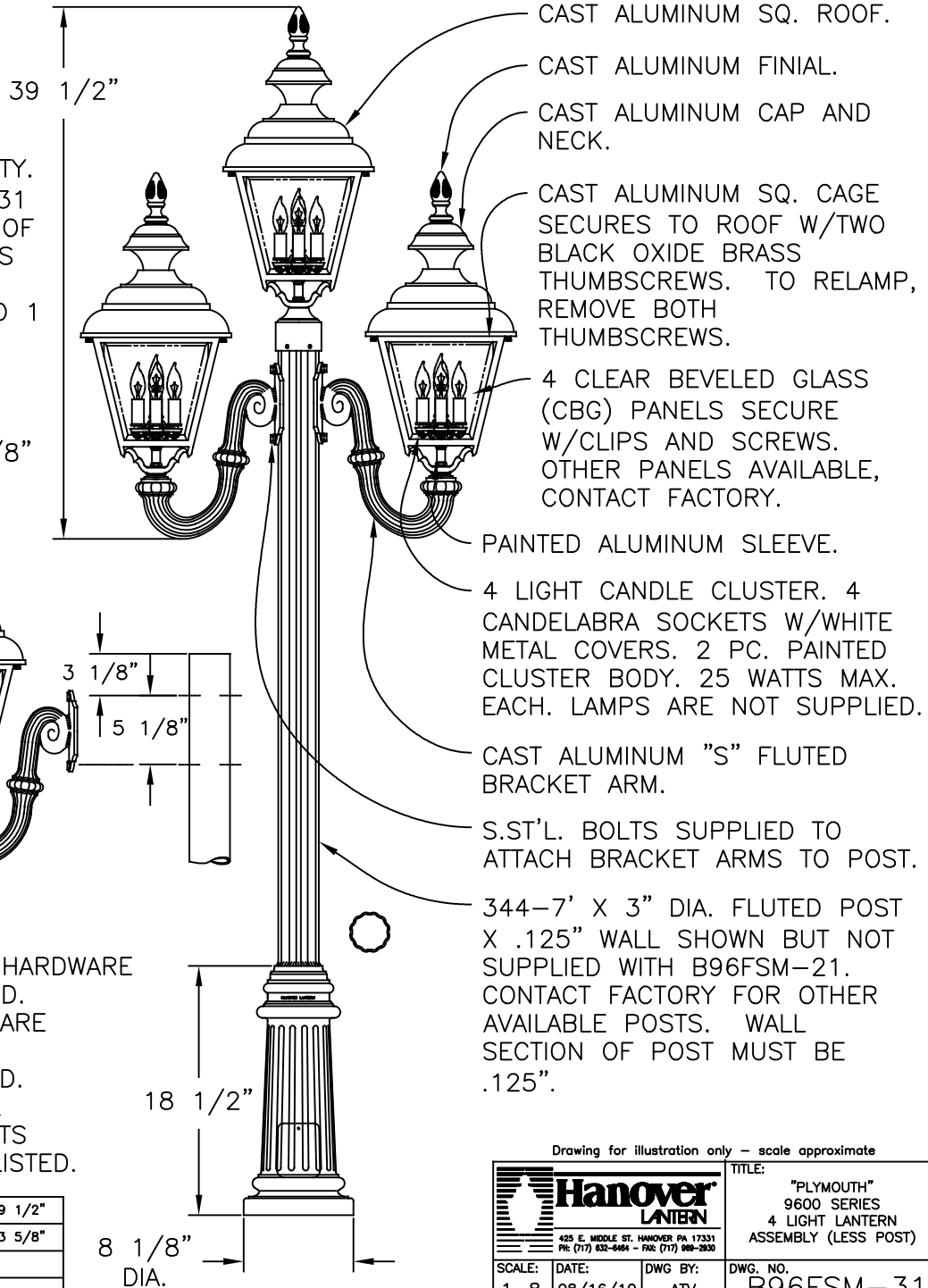


TWO POST MOUNTED FIXTURES SHOWN AT 180° AND REAR FIXTURE REMOVED FOR CLARITY. (B96FSM-31 CONSISTS OF 3 FIXTURES AROUND @120° AND 1 POST TOP MOUNTED FIXTURE).



CAST ALUMINUM SQ. ROOF.

CAST ALUMINUM FINIAL.

CAST ALUMINUM CAP AND NECK.

CAST ALUMINUM SQ. CAGE SECURES TO ROOF W/TWO BLACK OXIDE BRASS THUMBSCREWS. TO RELAMP, REMOVE BOTH THUMBSCREWS.

4 CLEAR BEVELED GLASS (CBG) PANELS SECURE W/CLIPS AND SCREWS. OTHER PANELS AVAILABLE, CONTACT FACTORY.

PAINTED ALUMINUM SLEEVE.

4 LIGHT CANDLE CLUSTER. 4 CANDELABRA SOCKETS W/WHITE METAL COVERS. 2 PC. PAINTED CLUSTER BODY. 25 WATTS MAX. EACH. LAMPS ARE NOT SUPPLIED.

CAST ALUMINUM "S" FLUTED BRACKET ARM.

S.ST'L. BOLTS SUPPLIED TO ATTACH BRACKET ARMS TO POST.

344-7' X 3" DIA. FLUTED POST X .125" WALL SHOWN BUT NOT SUPPLIED WITH B96FSM-21. CONTACT FACTORY FOR OTHER AVAILABLE POSTS. WALL SECTION OF POST MUST BE .125".

MOUNTING HARDWARE IS SUPPLIED. LANTERNS ARE PREWIRED AND TESTED. ELECTRICAL COMPONENTS ARE U.L. LISTED.

HEIGHT	39 1/2"
WIDTH	33 5/8"
PROJECTION	
TOP TO OUTLET	

Drawing for illustration only - scale approximate

Hanover
LANTERN

425 E. MIDDLE ST. HANOVER PA 17331
PH: (717) 632-6404 - FAX: (717) 989-2030

SCALE: 1=8 DATE: 08/16/10 DWG BY: ATV

TITLE: "PLYMOUTH" 9600 SERIES 4 LIGHT LANTERN ASSEMBLY (LESS POST)

DWG. NO. B96FSM-31