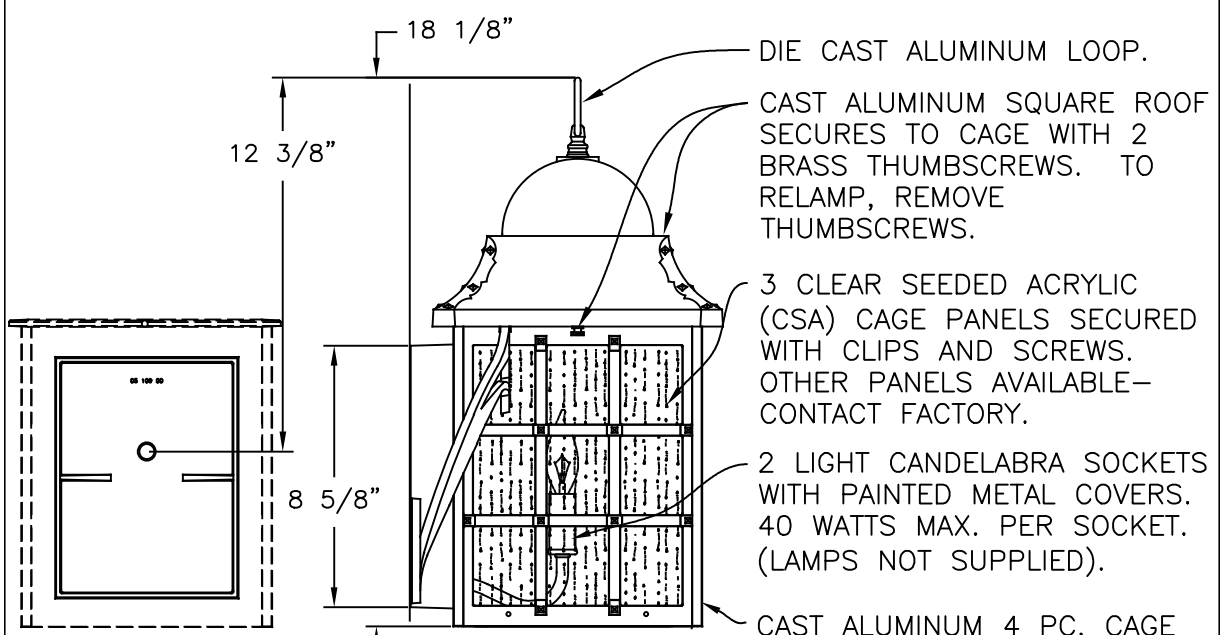


LANTERN TO BE ASSEMBLED AS SHOWN IN TOP VIEW.

9 5/8" SQUARE



DIE CAST ALUMINUM LOOP.

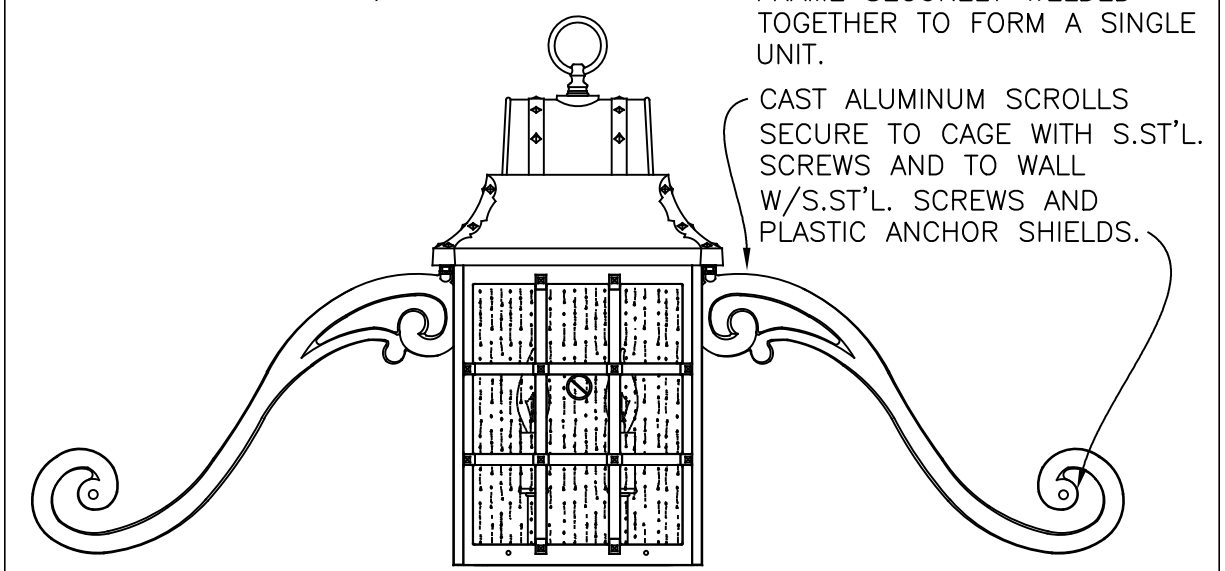
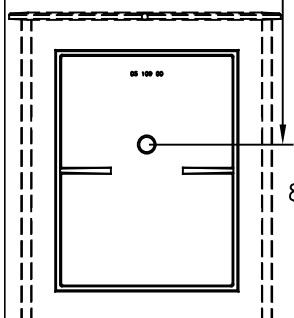
CAST ALUMINUM SQUARE ROOF SECURES TO CAGE WITH 2 BRASS THUMBSCREWS. TO RELAMP, REMOVE THUMBSCREWS.

3 CLEAR SEEDED ACRYLIC (CSA) CAGE PANELS SECURED WITH CLIPS AND SCREWS. OTHER PANELS AVAILABLE—CONTACT FACTORY.

2 LIGHT CANDELABRA SOCKETS WITH PAINTED METAL COVERS. 40 WATTS MAX. PER SOCKET. (LAMPS NOT SUPPLIED).

CAST ALUMINUM 4 PC. CAGE FRAME SECURELY WELDED TOGETHER TO FORM A SINGLE UNIT.

CAST ALUMINUM SCROLLS SECURE TO CAGE WITH S.ST'L. SCREWS AND TO WALL W/S.ST'L. SCREWS AND PLASTIC ANCHOR SHIELDS.



FRONT VIEW

LANTERN WILL BE PREWIRED AND TESTED. ALL ELECTRICAL COMPONENTS ARE UL. LISTED. MOUNTING HARDWARE IS SUPPLIED.

HEIGHT	18 1/8"
WIDTH	36 1/8"
PROJECTION	10 1/8"
TOP TO OUTLET	12 3/8"

Drawing for illustration only — scale approximate

SCALE: 1=4 DATE: 01/27/05 DWG BY: JEK

TITLE: "REVERE" 8300 SERIES WALL BRACKET LANTERN W/SCROLLS

DWG. NO. B8350