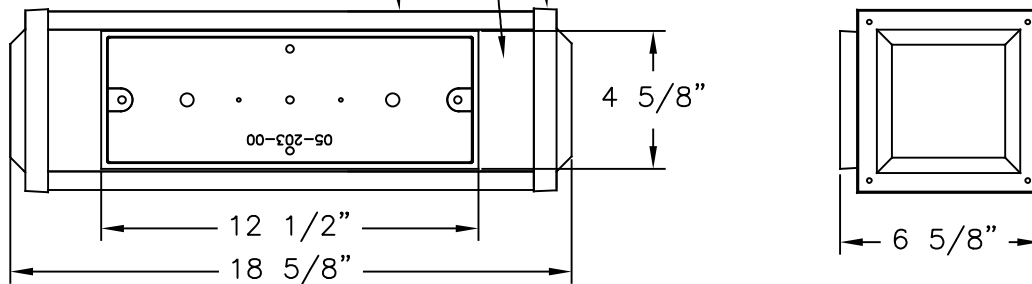


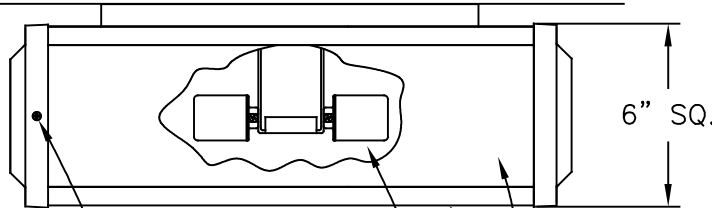
4 EXTRUDED ALUMINUM CAGE LEGS. SLOTS IN LEGS HOLD PANELS SECURELY IN PLACE.

SOLID ALUMINUM BACK PLATE.

CAST ALUMINUM END CAPS. SECURED WITH 8-32 SCREWS.



CEILING



3 CAGE PANELS, (OA) OPAL ACRYLIC SHOWN. (FG) FROSTED GLASS ALSO AVAILABLE.

DOUBLE PORCELAIN MEDIUM BASE SOCKETS. 60 WATT MAX. PER SOCKET. (LAMPS NOT SUPPLIED).

TO RELAMP LOOSEN SCREW AND SLIDE PANEL OUT TO THE SIDE.

SUITABLE FOR DAMP LOCATIONS ONLY.

LANTERN WILL BE PREWIRED AND TESTED.
ALL ELECTRICAL COMPONENTS ARE U.L. LISTED.
ALL MOUNTING HARDWARE IS SUPPLIED.

HEIGHT	6 5/8"
WIDTH	18 5/8"
PROJECTION	XXXX
TOP TO OUTLET	XXXX

Drawing for illustration only - scale approximate

Hanover
LANTERN

425 E. MIDDLE ST. HANOVER, PA 17331
PH: (717) 632-6464 - FAX: (717) 669-2630

SCALE: 1=4 DATE: 02/20/05 DWG BY: TLS

TITLE: "GEMINI"
7900 SERIES
CEILING MOUNT
LANTERN

DWG. NO. B7922