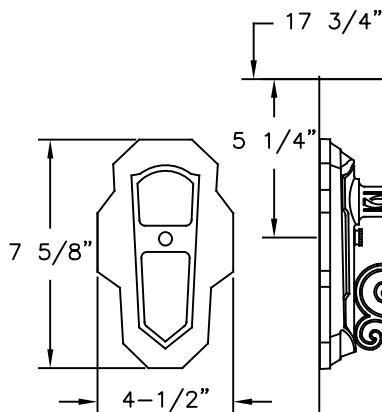


LANTERN TO BE ASSEMBLED AS SHOWN IN TOP VIEW— MOUNTED ACROSS FLATS.



- CAST ALUMINUM FINIAL.
- 2 PC. CAST ALUMINUM DECORATIVE BRACKET ARM.
- CAST ALUMINUM CAP AND NECK.
- WHITE ACRYLIC OR CLEAR POLYCARBONATE RIBBED DOME SECURES TO ROOF RING WITH S.ST'L. SCREWS. (CUSTOMER MUST SPECIFY WHITE OR CLEAR DOME.)
- CAST ALUMINUM ROOF RING SECURES TO CAGE WITH BRASS THUMBSCREWS. TO RELAMP, REMOVE THUMBSCREWS.
- INVERTED PORCELAIN MEDIUM BASE SOCKET WITH PAINTED METAL COVER. (LAMP NOT SUPPLIED.) 60 WATTS MAX.
- 6 CLEAR BEVELED GLASS (CBG) CAGE PANELS SECURED WITH CLIPS AND SCREWS. OTHER PANELS AVAILABLE—CONTACT FACTORY.
- CAST ALUMINUM HEX CAGE WITH OPEN BOTTOM.

LANTERN IS PREWIRED AND TESTED.  
 ALL ELECTRICAL COMPONENTS ARE U.L. LISTED.  
 ALL MOUNTING HARDWARE IS SUPPLIED.

HEIGHT	17 3/4"
WIDTH	8 3/8" DIA.
PROJECTION	10 3/4"
TOP TO OUTLET	5 1/4"

Drawing for illustration only — scale approximate

**Hanover**  
**LANERN**

425 E. MIDDLE ST. HANOVER, PA 17331  
 PH: (717) 632-6464 - FAX: (717) 699-2930

SCALE: 1=4    DATE: 07/31/02    DWG BY: JEK

TITLE: "MERION"  
 15200 SERIES  
 WALL BRACKET  
 LANTERN

DWG. NO. B15212