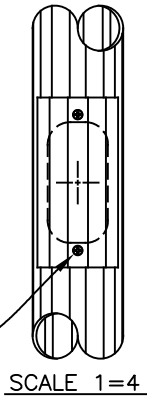


3" DIA. X .125" WALL ALUMINUM TUBING WITH 8 FLUTES.

REMOVABLE ALUMINUM DOOR WITH (2) 8-32 SCREWS. GROUND LUG WELDED TO REAR OF DOOR OPENING. OPENING OF DOOR IS 2" X 4" OBLONG. (DOOR SUPPLIED ON ALL POSTS LISTED).



GROUND LINE
FOR FOOTER DEPTH RECOMMENDATIONS, SEE UPPER RIGHT DRAWINGS.

POST	ACTUAL HEIGHT (FROM GROUND LINE TO TOP OF POST)
340-10	8'-6" (SHOWN)
340-11	9'-6"
340-12	10'
340-13	11'
340-14	12'

HEIGHT	8'-6"
WIDTH	3" DIA.
PROJECTION	
TOP TO OUTLET	

Drawing for illustration only - scale approximate

425 E. MIDDLE ST. HANOVER, PA 17331
PH: (717) 632-9464 - FAX: (717) 699-2930

SCALE: 1=8	DATE: 01/26/04	DWG BY: ATV	TITLE: 3" DIA. FLUTE DIRECT BURIAL POSTS
			DWG. NO. 340-10 THRU 14