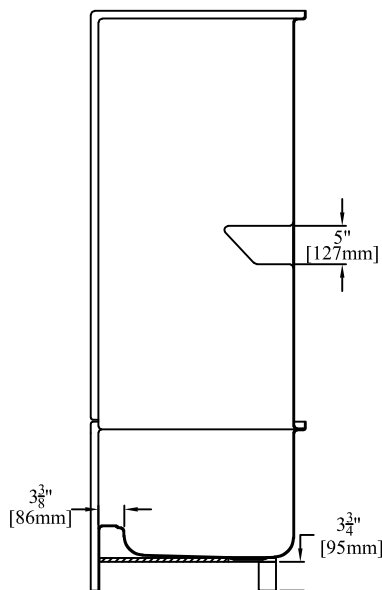
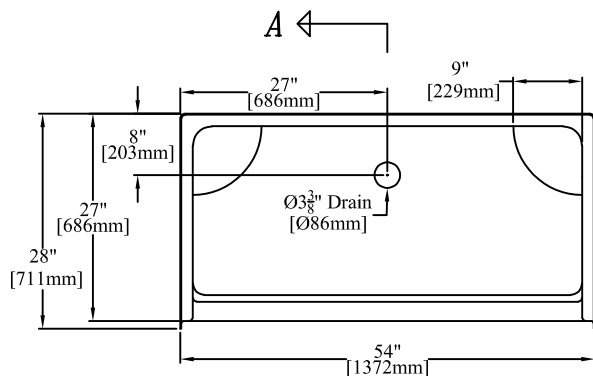


ELEVATION



SECTION "A-A"



A ←

PLAN

54" [1372mm] 3-Piece Shower
w/ 8 1/2" [216mm] Threshold & Molded Soap Ledges

REAR CENTER DRAIN

PRODUCT SPECIFICATIONS:

- * Certified to meet CSA B45.5/IAPMO Z124 Standard.
- * Product has a Class B fire rating as determined by ASTM E-84 test method.
- * Reinforced & slip resistant floor.
- * Sufficient drain clearance to accommodate above the floor plumbing.
- * Integral 1" [25mm] nailing flange.
- * Molded soap ledges.
- * Door Opening: W-50 1/2" [1283mm]
H-65 1/4" [1657mm]
- * All dimensions +/- 1/2" [12.8mm]
- * Clarion Bathware reserves the right to change design and/or dimensions.
- * Dimensions are the same for RE, MP, and all other versions of this model.

9954X

54" [1372mm] 3-Piece Shower w/ 8-1/2" [216mm] Threshold, Molded Soap Ledges, & Rear Center Drain

Clarion
 BATHWARE
 44 Amsler Ave.
 Shippensburg, PA 16254

Phone: (814) 226-5374
 Toll Free: (800) 576-9228
 Fax: (814) 226-0730
 www.clarionbathware.com

Signatures For Approval:

Customer: _____
 Arch./Engr: _____

Date: _____

Dwg. #
 9954X-CUT

Quote #: _____
 Job Name: _____

Dwg. By: CAL
 DATE: 4/30/2021

***** IMPORTANT NOTICE *****

Clarion Bathware reserves the right to change the design and/or dimensions of its products at any time. This drawing may have been updated since this publication was issued. Before placing an order for any product, refer to our website at www.clarionbathware.com to obtain the most current drawings for any products that you wish to purchase. Compare the date of revision of the drawing that you have with the one on the drawing on our website. If you do not have internet access, please call your sales representative or Clarion Bathware's sales department at 1-800-576-9228.