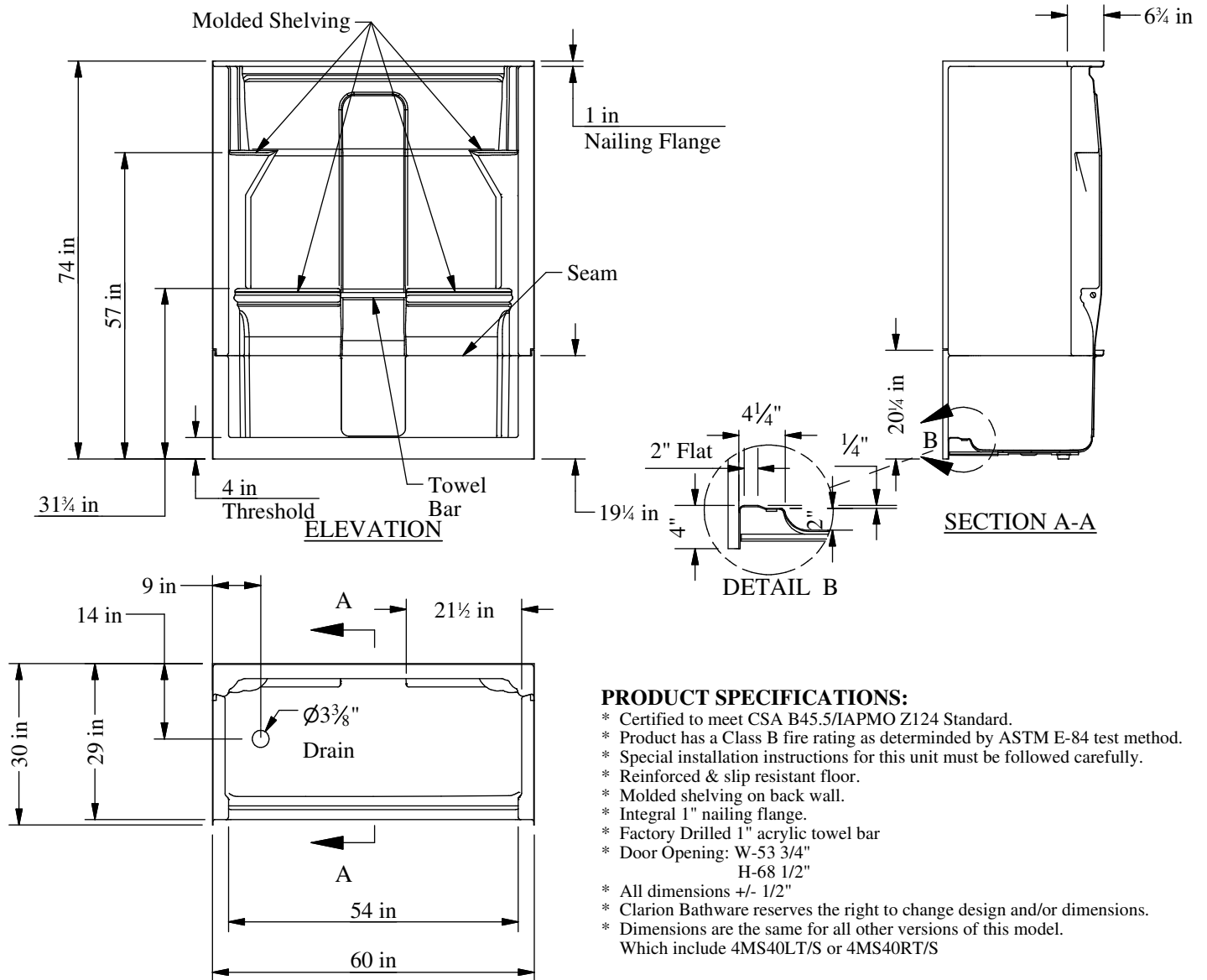


Quantum Series



PLAN
60" 4-Piece Shower
w/ 4" Threshold, Molded Shelving,
Left Hand Version (4S40LT) Shown

PRODUCT SPECIFICATIONS:

- * Certified to meet CSA B45.5/IAPMO Z124 Standard.
- * Product has a Class B fire rating as determined by ASTM E-84 test method.
- * Special installation instructions for this unit must be followed carefully.
- * Reinforced & slip resistant floor.
- * Molded shelving on back wall.
- * Integral 1" nailing flange.
- * Factory Drilled 1" acrylic towel bar
- * Door Opening: W-53 3/4"
H-68 1/2"
- * All dimensions +/- 1/2"
- * Clarion Bathware reserves the right to change design and/or dimensions.
- * Dimensions are the same for all other versions of this model.
Which include 4MS40LT/S or 4MS40RT/S

4MS40LT or 4MS40RT

60" 4-Piece Shower w/ 4" Threshold, Left or Right Hand Drain & Molded Shelving

Clarion
BATHWARE
44 Amsler Ave.
Shippensburg, PA 16254

Phone: (814) 226-5374
Toll Free: (800) 576-9228
Fax: (814) 226-0730
www.clarionbathware.com

Signatures For Approval:

Customer: _____
Arch./Engr: _____

Date: _____

Quote #: _____
Job Name: _____

DWG. #
4MS40LT or RT -CUT

Dwg. By: CAL
Date: 6/01/2021